

Let's Go!

2018

06 | Wanted: puppy parents!

We're looking to recruit more volunteer puppy parents to support the crucial first stage of training our amazing assistance dogs.

12 | Help us re-open our waiting list

We want to provide as many assistance dogs as possible but to do this we need your help!

Amazing dogs. Transforming lives.

Read more from some of our partnerships as they tell their stories about how their canine partners have transformed their lives.



**Canine
Partners**

Amazing dogs. Transforming lives.

Find out more
about Her Majesty
The Queen's visit to
our Southern Centre

PURINA® IS A
CORPORATE PARTNER OF



Join our Pets At Work Alliance today.

Imagine a future where pets and people are even better together.
A future where taking your pet to work is the norm for most people, not just a lucky few. At Purina® we live and breathe **Pets at Work** - and we want to help make it a possibility for everyone.

So go onto www.purina.co.uk to download the pets at work toolkit and turn your office pet-friendly today!

Meet Purina.

Find out more at purina.co.uk



Your Pet, Our Passion.®

Welcome



Canine Partners Chair of Trustees, Jackie Staunton

Reflecting back on my first eight months as Chair of Trustees, I'm pleased that 2017 ended so positively. In November, Her Majesty The Queen visited our Southern Centre and met staff and guests, laughed at puppy Wilko's obstacle dodging and smiled as she was introduced to partners on their residential training course. It was a true honour and a memorable day for all at Canine Partners.

We were also delighted with our fantastic fundraising in 2017. The Big Give Christmas Challenge 2017 appeal, coupled with some excellent national events throughout the year as well as the never-ending enthusiasm from our communities across the UK, resulted in an outstanding total of £2.43 million raised in 2017. We were also fortunate to be one of three charities chosen by The Telegraph's Christmas Appeal which resulted in us receiving funds raised by readers of over £200,000, as well as some incredible exposure in the national press.

Awareness of our work continued to grow into 2018, with our feature as top spot in ITV's Britain's Favourite Dog - the Labrador. Our very own Trustee Jon Flint and his canine partner Jester did us proud, representing the nation's favourite breed.

Then in March Clare Syvertsen and her canine partner Griffin represented us at Crufts 2018 in the Friends for Life hero assistance dog category.

Our success in fundraising coupled with the dedication of our operations team enabled us to create 74 new partnerships and this year our target is 80, with the ultimate objective of re-opening our waiting list by the end of 2018 and completing our Midlands Centre by constructing the kennel block. We hope to create 90 partnerships in 2019 and 100 in 2020 - and the future looks bright. Please help us to achieve our goals by using this magazine to spread the word and change the lives of more disabled people across the UK.

Looking ahead, 2018 will see a plethora of events across England and Scotland as we strive to raise funds and awareness to help us with our work. On 25 May, new European legislation is being introduced to regulate the protection and safe-keeping of personal data that charities hold for individuals. Please take a moment to head to our Communications Preference Centre on our website www.caninepartners.org.uk/keepintouch or call us on **01730 716000** to let us know how you'd like to hear from us in the future. We want to retain a trusting relationship with all those who choose to support us so we promise to keep your details secure at all times.

Last but not least, we are delighted to welcome Nicola Martin as our new Chief Executive Officer. Nicola brings a wealth of experience from PDSA, but I will let her tell you more on page 5.

It just leaves me to say a massive thank you, on behalf of the trustees, for all the support we receive - we really couldn't do it without you!

In this issue...

- 4** Her Majesty The Queen visits our Southern Centre in West Sussex
- 5** Introducing our new Chief Executive, Nicola Martin
- 6** Wanted: volunteer puppy parents!
- 8** Partnership - "From the moment I saw Delilah with Geoff I started to relax"
- 10** Leave a legacy. Transform a life.
- 12** Help us re-open our waiting list!
- 14** Partnership - "Before Bumble I'd lost all my confidence and hadn't been out on my own for over a year."
- 16** My Amazing Puppy
- 18** Give the Gift of Independence
- 20** Our Purple Family
- 22** Partnership - 'I've moved into my own specially adapted flat and I take Ralph out for a long walk on my own every day.'
- 24** Celebrating the companies who support us
- 27** A packed year full of fun and excitement

P.S. When you have finished reading, please share this magazine with friends and family or donate it to your doctor's, dentist's or hairdresser's waiting area.

Get in touch

We always love to hear from you.

You can follow us on Twitter, Facebook, YouTube and Instagram.

Write to us at:

**Mill Lane, Heyshott,
West Sussex GU29 0ED**

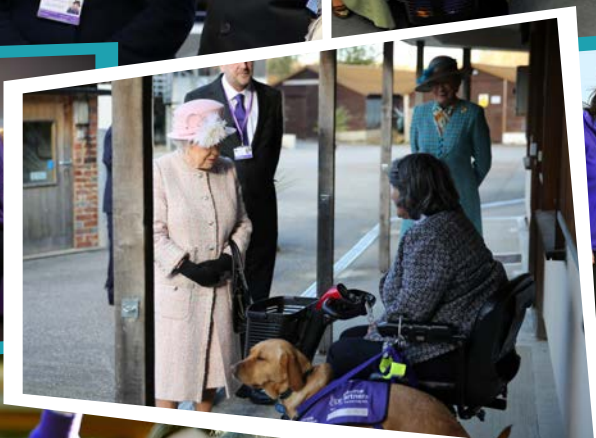
or call **08456 580 480**.

Her Majesty The Queen visits our Southern Centre

It's not every day you get a very royal visit, but on Thursday 30 November 2017, the Canine Partners Southern Centre had just that, from no less than Her Majesty The Queen!

As part of a tour of West Sussex, Her Majesty arrived at our Southern Centre to come and see the work that our amazing dogs do, meet some of those we help, as well as unveil a special plaque to commemorate a total of 750 partnerships created by Canine Partners since the charity was founded in 1990.

We were incredibly honoured to welcome The Queen to Canine Partners and believe she thoroughly enjoyed the visit.





Introducing our new Chief Executive, Nicola Martin

Hi Nicola, so we're delighted to have you as part of the Canine Partners family. Tell us a bit about you...

Where do you live?

I live in the beautiful county of Shropshire, close to the Wyre Forest. As Canine Partners is a national charity I will be splitting my time between our Southern and Midlands centres as well as visiting our training satellites and community groups across the UK. I will also be attending a wide range of events throughout the year.

What is your career background that's brought you to this role?

I trained as a Vet at Liverpool University and then spent eight years working in small animal practices in the midlands. Most of this time was spent working for veterinary charity PDSA at one of their busy Pet Hospitals. From there I moved into a central role for the charity where I developed PDSA's community outreach services and managed all the veterinary policy and campaign activities. As part of the leadership team I was involved in all aspects of charity management and realised

how much I enjoyed fundraising, marketing, team development and impact measurement and so was delighted to get the opportunity to bring some of these skills to Canine Partners.

What do you get up to in your own time?

I have two crazy Irish water spaniels, two Kune-Kune pigs and around 20 chickens. I spend a lot of my free time looking after them all, as well as long woodland and riverside walks. I am also passionate about art and would have gone to art college if I hadn't made it to vet school. As a vet, improving animal welfare is something close to my heart and I am a Trustee of the Animal Welfare Foundation.

Why Canine Partners? What draws you to our charity?

Throughout my career I have seen the difference that animals make to all our lives and the opportunity to get involved with an organisation that has both people and dogs at the heart of its services seemed the perfect fit for me. During the interview process it was evident how passionate everyone was about the partnerships Canine Partners creates, and so I was delighted to be offered the role.

What are you most excited about doing in your role here at Canine Partners?

Canine Partners has come so far over the last 27 years thanks to the insight of its founders and dedication and passion of all the staff and volunteers during that time. The charity has many of the foundations in place and so I hope to continue that journey and raise greater awareness of the charity to a much wider audience. My focus will be on ensuring we are fit for the future focusing on areas such as team development, supporting our volunteers, using technology to improve communications and finding new opportunities for income generation. I am also passionate about being able to demonstrate the difference we make as an organisation and will be working with our partners, volunteers and teams to showcase the impact we deliver both internally and externally.

I believe Canine Partners has a very bright future thanks to the hard-work, passion and commitment from everyone involved, and when I listen to the stories that were shared on my first partnership day, I know that we all have a role to play to continue on the journey that began nearly 30 years ago and create even more life-changing partnerships.



Wanted: volunteer puppy parents!

As the demand for life-changing Canine Partners assistance dogs rises, we're looking to recruit more volunteer puppy parents to support the crucial first stage of training our amazing dogs

Read on, to find out whether you could play a vital role in the early life of an assistance dog...

So what exactly do puppy parents do? Well, as a puppy parent, you will look after a puppy in your home, from the age of seven weeks to 14 months. Throughout your time as a puppy parent you will benefit from training sessions, guidance and support from one of our knowledgeable local satellite trainers who will be there to ensure as many of our puppies as possible meet the grade and move into advanced training.

During this time, it will be your responsibility to focus on the

basics by teaching the puppy good manners, such as walking on the lead, toilet training and settling quietly. It is also crucial that the puppy is well socialised and gets used to being around people, as well as other animals, and is comfortable in a variety of different environments.

Next, you will teach the puppy to respond to the basic commands 'sit', 'down', 'wait' and 'come here'. Finally, you will teach three essential actions which they'll need to master ahead of their advanced training: to touch his or her nose to your hand, to perform a tugging motion and to pick up an object.

After 14 months, the puppy will then return to one of our centres where they will begin around 17 weeks of specific advanced training before being paired with a disabled person who has successfully applied for a canine partner. Together they will attend two weeks of training at one of our centres, returning from around six months after placement for a special partnership ceremony. Puppy parents are invited back to meet the partnership they have helped create and see the puppy they looked after for 14 months now a fully trained canine partner in action.

What does it take to be a puppy parent?

- ✓ be at home for most of the day and not work full-time
- ✓ be over 18 years old
- ✓ own suitable transport to get to and from the regular training sessions that you need to attend and visit places to support the puppy's socialisation
- ✓ have a secure dog-friendly garden
- ✓ live within the catchment of one of our satellite trainers
- ✓ be willing and able to make a 14-month commitment to being a puppy parent
- ✓ be fit and healthy in order to have the stamina to manage and exercise an active puppy
- ✓ be committed to following our specific training methods



All of the puppy's living expenses, food, vet bills and equipment, are paid for by the charity.

Being a puppy parent is highly rewarding, challenging and a lot of fun - we provide plenty of support within our network and many of our existing puppy parents have cared for a number of puppies over the years because they enjoy it so much and appreciate what a difference these amazing dogs make.

Meet long-standing puppy parent Ruth Breeding and current puppy, yellow Labrador, Wilko.

Wilko is Ruth's eighth Canine Partners puppy – she has had him from the age of seven weeks and will keep him until he's around 14 months old. Of her initial decision to apply for the role of puppy parent, Ruth says:

"In 2011 I was keen to take on some voluntary work. After making enquiries I really took to the idea of puppy parenting and met with the East Sussex satellite trainer. Not long after, I got my first puppy, Gooch.

"It was a bit daunting at first – it's obviously quite a responsibility, knowing the important nature of the puppy's early learning – but I had lots of support from our satellite trainer and nearby puppy parents also gave moral support so I gradually learned to relax, enjoy and trust in my capabilities.

"I've bonded with each of the puppies I've parented and Wilko is no different. He's the most affectionate, kind and willing boy – I have no doubt that he will go on to be a wonderful canine partner.

"Being a puppy parent is hugely rewarding and has become a way of life – of course I enjoy the cuddles but knowing that I'm contributing to a very special dog's training is the most satisfying part. I can't lie: saying goodbye is pretty tough and I shed a tear every time but I know that the pup is going on to do something life-changing. Attending the partnership ceremony is a highlight and seeing both human and dog blossom is a privilege. To anyone who is thinking about this I would urge you to go for it and enjoy every moment!"



Emma Gill is a first-time puppy parent to Gonzo, a yellow Labrador pup.

Emma had been thinking about becoming a puppy parent for a while and says:

"I've always had dogs in my life – there's never been a point where I haven't. I have two dogs of my own and I'm also involved with home boarding and rehoming dogs. I've previously taken an instructor's course so offer agility and obedience training which has stood me in good stead for being a puppy parent as I feel fairly confident where training is concerned.

"Our satellite trainer, has been very supportive – we see her once a week and run through a variety of exercises with Gonzo. It's also great to have met people in and around Hull. I've made some new friends through our shared activity.

"Gonzo is absolutely brilliant – he's a star, is good with everything and a joy to have around. He has been so easy to train and just goes with the flow – he plays with the kids but is also happy to chill out. I wouldn't hesitate in parenting another Canine Partners puppy as it's such a worthwhile thing to do."



We also need puppy fosterers to support our puppy parents so they can have a day off if needed and during advanced training as our dogs only attend from Monday to Friday and need somewhere to stay over the weekend – can you help?

Puppy foster parents need to live within our puppy training satellite catchment areas. Advanced training fosterers need to live within an hour of either our Southern Centre or our Midlands Centre and would ideally be able to commit to 17 consecutive weekends.

If you have any questions about becoming a Canine Partners puppy parent or fosterer and/or would like to apply, please visit caninepartners.org.uk/puppy-parents

to complete an enquiry form and a member of the Puppy Department will be in touch.



Partnership Geoff and Delilah

In April 2013 Geoff Ellis, then 33 years old, suffered severe injuries whilst riding his mountain bike. With two dislocated vertebrae and his spinal cord severed, Geoff was left permanently paralysed from the waist down.

Read on, to find out how assistance dog, Delilah, has transformed the lives of Geoff and his parents.

During his rehabilitation at Salisbury Spinal Unit, Geoff was introduced to Canine Partners. He left hospital six months later, in October 2013, and initially stayed at his parents' home but it wasn't until June 2014 that Geoff decided to apply for a canine partner.

In May 2015, Geoff received a call to say that he had been matched to a black Labrador, Delilah, and was invited to our Southern Centre to meet her.

"As soon as I interacted with her, I knew that Delilah was going to be my dog. In July 2015, I returned to Heyshott for an intensive two-week residential partnership training course so that I could learn what I needed to do once we were home. Although Delilah had already completed her advanced training, it was an opportunity to 'fine-tune' her

skills to meet my specific needs. Because I play and coach tennis, part of our training was spent at a local tennis court with our advanced trainer – Delilah was great and definitely showed she would be a willing attendee at the courts!"

Geoff likes to chop wood for his fire and Delilah has now learned how to help him with this task as well.

"When I'm chopping the logs for kindling, small pieces can sometimes shoot off in all

Delilah's training was funded by the generosity of a Canine Partners legacy supporter – to find out more about leaving a gift in your Will, please turn to the next page.

Jenny Ellis, Geoff's mum, reflects on the positive effect Delilah has had on their family.

"Following his accident, we wanted to see Geoff live an independent, happy life, once again. He was absolutely determined to do so and that made us incredibly proud of him.

"Geoffrey wanted a dog of his own and went to a dog rescue centre to trial a border collie. Unfortunately, the first time he took the dog out it pulled him right out of his wheelchair – it was obvious that an ordinary dog would be a challenge to handle from a wheelchair, so at that point Geoffrey applied to have a Canine Partners' assistance dog.

"From the moment I saw Delilah with Geoff I started to relax, knowing that she was there for him. She's intelligent, loving, playful, very obedient and such a character – she brings so much joy and lightness to our family.

directions onto the lawn. Instead of me having to spin round, roll down the path and onto the grass to collect the stray bits of wood, Delilah gathers them up and brings them to me. Her ability to support me with new tasks has become apparent over time: helping with chopping wood wasn't something Delilah was originally trained to do but her intelligence and eagerness to help is boundless."

Geoff's link to Canine Partners has even led to him returning to work. Mark Smith, founder of Portsmouth business, The Car Finance Company, had decided to donate £20,000 to local charities – Canine Partners was amongst them.

"Living locally, Delilah and I were asked to go and receive the cheque on behalf of the charity which is when Mark offered me a job. I'm very grateful to Mark and my colleagues for all their help – everyone has been great in supporting me learn new skills and get my life back on track."

In their spare time, Delilah gives Geoff a great reason to get out of the house and they regularly

"One day when we were walking her in the countryside near our home, she disappeared into a hedge. After much scrabbling around, Delilah popped out with a mangy looking toy monkey in her mouth. We couldn't stop laughing as she proudly walked the five miles home with that monkey – she wouldn't let go and it has since become one of her favourite toys!

"Delilah has filled a void in our lives. She has given us companionship, laughter and fun – she's a truly special dog and I thank Canine Partners, the puppy parents, foster parents, sponsors and everyone else who works so hard to train and provide people like my son with a canine partner."

enjoy many walks when she can swim in the sea, run through the long grass and play with other dogs. The two of them have made new friends through their walks and now regularly meet up with other dog owners and socialise together.

"I enjoy seeing her running and playing with her canine friends as much as when she helps me with day-to-day tasks around the house. Taking Delilah out every day has definitely got me fitter and has helped with my tennis as well.

Delilah has helped Geoff and his parents in so many ways. His younger brother, Olie, had struggled with mental health issues for many years and tragically, 10 months after Geoff's accident, Olie took his own life.

"Olie would have loved Delilah – he was such a huge animal lover. Having Delilah arrive in our lives has been such a boost and I feel it needs to be acknowledged against all the bad experiences we have been through.

"It's hard to express just what a difference Delilah has made to



us. Having her by my side has strengthened my resolve to move on with the next phase of my life. Her obvious love of life reminds me and my parents that our life is worth living, no matter what has happened in the past.

"As well as the practical help, which makes my life easier – with the washing machine, logs for the fire, picking things up and fetching the phone – her companionship is invaluable. I can't imagine my life without her."

Leave a legacy. Transform a life.

Leaving a gift in your Will is a positive way to make a huge difference to someone's life

As a charity we rely solely on the generosity of our supporters, and legacy donations are an invaluable source of funding for us although by their nature unpredictable.

So, what better way to be part of our future – ensuring we help as many people as possible who could benefit from a canine partner – than by leaving a gift in your Will and knowing that we are securing income for the future?

In 2017 we created 74 partnerships – of which many were funded by gifts, kindly left to us in Wills. Big or small, you can be assured that anything you donate to us will be invested in creating and maintaining partnerships between disabled people and our amazing assistance dogs

“To say Keith has transformed my life would be an understatement. He has given me confidence, purpose, enthusiasm and brightened up my future. How can I possibly feel negative about what lies ahead when Keith puts his head on my knee and looks up with his big brown eyes?”

Become a member of our Legacy Club

If you do decide to include a gift to us in your Will or you have done so already, then please let us know so we can show our appreciation by inviting you to join our informative Legacy Club. Members are

invited to an annual event where they can meet partnerships like Geoff and Delilah to see just how supporting us in this way can help make a lasting difference by transforming people's lives forever.

It doesn't have to cost money today to support Canine Partners

When the time comes, a gift left in your Will could make a substantial contribution to our work long into the future.

Leaving a gift in your Will could also help reduce the Inheritance Tax liability of your estate for your loved ones and beneficiaries. If

you leave 10% or more of your estate to charity, any Inheritance Tax due may be paid at a reduced rate of 36% instead of 40%. Please ensure you do get financial or legal advice to assess your circumstances appropriately.



Bonnie Tse, a retired GP from Storrington in West Sussex, is a long-term Canine Partners supporter and has left a gift in her Will.

I first heard about the work of Canine Partners 16 years ago through a neighbour who was a dog behaviourist and trainer. She was working with the charity at the time. She showed me a video of how dogs could be trained to become assistance dogs that transformed the lives of people with physical disabilities. I was very touched as well as impressed by the skills of these dogs.

It struck a chord with me, a dog lover who has gained so much from the love and devotion of my canine companions over the years. I decided then to support the work of Canine Partners. Over the years I have sponsored several puppies through the My Amazing Puppy scheme. I also updated my will to leave a legacy for Canine Partners. As I do not have any dependent family other than my dogs, I thought it would be wonderful if my legacy could help to give hope, independence and purpose through these amazing creatures.

After my retirement from general practice I applied to become a puppy parent for Canine Partners. I was delighted to be given Arthur, a gorgeous black Labrador puppy to look after. Unfortunately Arthur developed a hip problem at 13 months and could not go into advanced training. He was withdrawn from training and I was lucky enough to re-home him. He is now part of my family together with Lottie my black standard poodle. Arthur may not have passed his training but he did pass muster to become a meet and greet dog and canine volunteer for the charity.

I love the work of Canine Partners in helping to transform lives. I take every opportunity in spreading the word whenever I can. I am happy to say that as a result quite a few of my friends have become supporters too. As someone who has benefitted from the kindness and love of so many over the years I want to help to make life better for others in whatever way I can. Supporting the work of Canine Partners through these amazing dogs is just what the doctor ordered!



Supporters can also give a gift in memory of a loved one

A gift of £5,000 or more could sponsor a puppy that can be named in memory of someone special – giving the comfort of allowing their memory to live on whilst also making a lasting difference.

You can change someone's life by leaving a lasting legacy

If you would like to find out more about leaving a gift in your Will, please call **08456 580 480** or email legacies@caninepartners.org.uk



Help us re-open our waiting list!

At the beginning of 2017 we were forced to make the extremely difficult decision to close our waiting list and not accept any new applications for assistance dogs.

At that point, we had an exceptionally long list of people who were waiting for an assistance dog and we needed to make them our number one priority.

Whilst it's very positive that people know about Canine Partners – and are acknowledging the huge benefits of our assistance dogs – we simply can't keep up with the overwhelming demand until we have raised more funds to enable us to increase our resources further. It costs £10,000 to fund the training of a canine partner, and a further £10,000 to support the aftercare which we provide for the duration of the partnership.

We train our amazing dogs to be able to help those who were born with a physical disability or acquired their disability through illness or injury – with everything

from everyday chores to coping with medical emergencies.

Those currently on the waiting list may have any one of a broad spectrum of conditions, ranging from multiple sclerosis, arthritis and Ehlers-Danlos syndrome to acquired brain and spinal injuries, all with differing requirements for support and often with changing needs.

It can be hard to imagine what life with a significant physical disability might be like – simple tasks can be very difficult, or even impossible, and the reliance on another person for help can strip away independence and diminish confidence. Our specially trained dogs are there to help with physical tasks and make life easier, whilst also giving their human partners vital companionship and affection.

In 2017 we placed 74 dogs, so reduced the list slightly, and at the beginning of April 2018 we had over 150 applicants on our waiting list – just imagine how 150 peoples' lives could be transformed by an amazing canine partner with your support!



We remain committed to providing as many assistance dogs as we possibly can – we plan to create 80 partnerships this year and hopefully re-open our waiting list by the end of 2018 – but, to do this, we need your help!

We rely on regular sustainable income, which is why we're so keen for supporters of all types – from individuals to corporates – to sponsor part or all of the creation of a partnership. Our Gift of Independence scheme does just that – read more on pages 18 and 19. Alternatively you could sponsor one of our puppies through our My Amazing Puppy scheme – check out pages 16 and 17 for more details and to sign up today.



Here's how to support us, both today and into the future

Make regular donations by sponsoring a dog through our My Amazing Puppy scheme, from as little as just £1 a week



Sponsor a partnership through our Gift of Independence scheme, from £800

Pledge corporate support (take a look at pages 24 and 25 to find out more)



Raise money and awareness in your community through fundraising activities

Leave a legacy in your Will (see pages 10 and 11 for more information)



What are successor dogs and how do they impact our waiting list?

A successor dog is one who takes over the life-changing duties of a retiring canine partner. This could be for a number of reasons, and at any time, but we plan for the majority of our working assistance dogs to retire at around 12 years of age.

Once they have qualified for one of our assistance dogs we give a commitment to all our partners that we'll provide the benefit for as long as they need it.

Knowing how invaluable our assistance dogs are, we always prioritise those who need a successor since they will have built their lives around having the help, support and companionship of a canine partner.

At the moment, 62 of our current partnerships have dogs who are eight years old or over*. These dogs could retire at any time and we need to be ready to welcome them onto our list to place a new canine partner with them. Basing our expectations on previous statistics, we forecast this as 30 successors joining the waiting list in 2018 and the successor figure is set to rise in 2019. The figure of 150 applicants on the waiting list includes these successor partnerships.

**figure correct at time of writing (April 2018)*



Partnership Sandra and Bumble

In 2009, at the age of 44, Sandra Bell was diagnosed with multiple sclerosis – an autoimmune condition which can cause a range of symptoms including problems with vision, arm or leg movement, sensation and balance.

Sandra was partnered with canine partner Bumble in May 2015 – this is their story:

“At the time of my diagnosis I was going about my life as normal, working as a Psychiatric Liaison Nurse Manager. Although my job could be quite stressful I enjoyed

it and felt like I was making a real difference by helping people in crisis.

“Initially, after my diagnosis, I was adamant that I wouldn’t use a stick; then I wouldn’t use crutches, but as time has gone on I’ve accepted that I will use whatever it takes to get me from A to B!

“I took early retirement, but until then had continued to work through some very difficult times. I was devastated to leave my job but now I look upon it as a blessing: if I hadn’t left, I probably would never have applied to Canine Partners for an assistance dog.

“I requested an application form but did nothing with it for a year. It was only when I met Carter, a beautiful golden doodle canine partner, with his partner Heather that things changed. I talked to Heather at length about Canine Partners – her parting words to me were to apply as I had nothing to lose.”

In May 2015 Sandra got the call she’d been waiting for: there was a potential canine match for her at our Southern Centre in Heyshott, West Sussex.

“Two days after the call, we were on a flight from Glasgow to meet Bumble. I remember the moment I first saw her like it was yesterday – she sashayed through the door and it was love at first sight – she

“I cannot tell you how much I love Bumble and what a difference she has made to my life. When I go out, people stop and talk about what she does for me, rather than avoiding the lady in the wheelchair. Before Bumble I'd lost all my confidence and hadn't been out on my own for over a year, now I'm never on my own with her at my side.”



is such a pretty wee dog and I couldn't believe how lucky I was.

“After the match was confirmed, I headed back to Heyshott in June for the most fantastic two-week residential training course. It was one of the hardest things I'd done for a long time and although I was totally exhausted I met lifelong friends. A few months after returning home with Bumble I realised what all that hard work was about – creating a partnership.”

Bumble and Sandra quickly bonded and Sandra was soon able to rely on her canine partner for help with certain tasks which had, in the past, frustrated her:

“When I dropped things – which I do frequently – Bumble picked them up with her tail wagging and was delighted to help. I really struggled to get my clothes off which she does with ease, even putting them on the chair for me. She gets me the phone, which is a huge reassurance to my family, as they know she can help if anything happens. She also lifts

the footplates on my wheelchair which I cannot do on my own.”

As well as supporting Sandra with her essential day-to-day activities, Bumble also had a morale-boosting effect.

“We had all got a bit wrapped up in what wasn't going well with my MS, but Bumble changed the focus. She gives me so much love and makes me smile every day when, before, I couldn't always find things to smile about. However, I always tell people that she isn't a robot; she's still a dog. When she's working she wears her purple jacket with pride, but when it's playtime she gets to run around the park with her friends.”

Sandra isn't Bumble's only fan, either. The team at their nearby TK Maxx store – where Sandra likes to shop – have been so impressed by Bumble's skills that they've raised £1,500 for Canine Partners through their community fund.

“I genuinely mean it when I say how life-changing it is to have a canine partner. Bumble gives me



unconditional love and she melts everyone's hearts. I wouldn't be as happy as I am today if it wasn't for Bumble and I cannot thank everyone who helped to raise her enough. All dogs are amazing, but some are truly amazing – like Bumble and all the other canine partners.”



my amazing puppy



myamazingpuppy.org.uk

Sponsor a puppy. Transform a life.

Would you like to help change someone's life for the better, with the gift of support, companionship, confidence and independence? Sponsoring the training of a Canine Partners assistance dog, through our My Amazing Puppy (MAP) scheme, is a chance to do just that...

We depend on the commitment and generosity of our wonderful supporters to fund our vital work. Your regular donations through MAP help us to purchase and train more puppies who will literally transform the lives of their human partners.

Every three months we get another two brand new puppies – full of potential and eager to learn – and, as their sponsor, you can hear all about their

progress throughout their first year of training.

Meet the class of 2018! Joining Snowdrop and Frosty, this Easter we launched the adorable Bambi and Thumper. Bambi is a quizzical dark yellow Labrador cross golden retriever who's an affectionate soul always eager for a cuddle. And Thumper, a yellow Labrador, is an active chap with lots of energy to burn off and places he's keen to explore.

As we move into the summer months, we'll be joined by our special seasonal sporting favourites and tennis themed pups, Venus and Federer.

As more people hear about Canine Partners, the demand for our assistance dogs is at an all

time high. We'd love to increase the number of partnerships we can create, to reach as many people as possible who could benefit from being paired with their very own canine partner.

If you're already sponsoring one of our amazing puppies why not consider sponsoring another – maybe Bambi this Easter, Marigold in the summer and Prancer at Christmas – you could have the whole collection and know you are making a significant difference to even more people's lives.

Sponsor an amazing puppy for as little as £1 a week – a lot less than the cost of a coffee from your local cafe – and it truly changes lives!

Sponsor your own amazing puppy today!

With your support, Canine Partners can purchase and train more amazing assistance dogs and change a disabled person's life forever.

As a special thanks for your generosity, you will receive:

- a soft toy puppy
- a special personalised certificate
- a photograph of your chosen pup
- regular 'pupdate' newsletters about his or her progress during their first year of training



Read about successful partnerships Geoff and Delilah (p8 and 9), Sandra and Bumble (p14 and 15), and Paul and Ralph (p22 and 23)



Sign up online today at myamazingpuppy.org.uk or call 08456 580 480 and speak to a member of our fundraising team.



Bambi

Hi there!

We're Bambi and Thumper – two lucky little pups who've been specially selected by Canine Partners for their My Amazing Puppy sponsorship scheme.

We may look like cute and mischievous bundles of joy at the moment but we've already started our very important journey to becoming assistance dogs.

At the moment we're living with our lovely volunteer puppy parents who are teaching us good

manners and helping us with our toilet training. Our puppy parents also make sure we enjoy socialising with people and other animals and are relaxed and comfortable when we visit lots of different places, whilst wearing our smart purple uniforms to show that we've got important work to do.

Thanks to the hard work of our puppy parents, we're learning the vital skills we need to master before we em-bark (sorry!) on our advanced training, when we're about 14 months old. Don't worry, although we're learning a lot, we have plenty of time to play and relax (being a clever pup can be tiring, so we do a lot of sleeping, too!).

If you sponsor our training then we promise to send you plenty of 'pupdates' – our special newsletters which tell you all about our progress and adventures during our first year.

After a year we'll start our advanced training at 'big school' – we'll learn about task work and

how to help a disabled person with their day-to-day life.

Once we've completed our advanced training comes the most exciting part: meeting our new human! Once the match has been confirmed then we will have two weeks of special training together, just to make sure our skills match the lifestyle and requirements of our human partner perfectly.

We can't wait to start our training as we're good at learning and really want to help – it helps that we get tasty treats and cuddles when we're extra-clever!



Thumper



75-year-old Rubina Savage first learned about our puppy sponsorship scheme when her daughter started a new job at our Midlands Centre and now she's a dedicated member of our 'Purple Family'!

"My daughter Helen works at the Midlands Centre and told me about the fantastic life-changing work of the charity. I knew straight away that I would like to get involved, so I started out with My Amazing Puppy.

"In my first year I chose to sponsor Maverick – receiving regular newsletters about his progress was great and I was delighted and proud when he graduated and was partnered with his human – I could see how my contributions had made such a huge difference to

someone's life. I'm now on my second puppy – Smartie, a chocolate Lab.

"Even as pets, dogs give so much back – they forge such strong bonds with their owners – and then there's the dual life of an assistance dog, providing practical help, as well as companionship, which builds self-worth and confidence."

The retired primary school teacher is so enthusiastic

about what we do that she's now lending her skills as one of our volunteer speakers, giving talks to schools, church and WI groups, golf clubs and many more besides.

"I feel so passionate – and rather emotional – about the work of Canine Partners and really enjoy engaging with people and spreading the word! For my first ever session as a volunteer speaker I visited a primary school where the children were so interested to learn about every aspect. Since then I have started to link up with puppy parents, demonstration dogs and their handlers and established partnerships for my sessions as we find it makes everything more relatable to have a dog there and gives a great insight into the process."

Gift of Independence

What could be more rewarding than transforming someone's life by giving them their independence?

Read on, to find out more about our special sponsorship scheme...

The Gift of Independence is a collection of sponsorship packages – that equate to the needs of our training process and budgets – offering our supporters a way of playing a pivotal role in funding one of our amazing assistance dogs.

- Package 1:** Purchase of a puppy – we need to purchase 130 puppies in 2018.
- Package 2:** Puppy training – we need to fund training of 130 puppies.
- Package 3:** Advanced training – we're aiming to create 80 partnerships this year, which means 80 dogs that will successfully come through training at our Midlands and Southern Centres.
- Package 4:** Aftercare – we have 400 active partnerships which means we need to provide aftercare to all 400.

Who can give the Gift of Independence?

Anybody who wants to make a real, lasting difference to the life of a disabled person! We welcome sponsorship from everybody – whether you're an individual, a team of friends or colleagues, a school, community, club or society, or a business.

The five stages and levels of sponsorship

- 1. Purchasing a puppy - £800**
Our puppies are sourced from our own breeding programme or through our approved breeders.

- 2. Preparing a puppy for 'big school' - £4,200**
From the ages of eight weeks to 12-14 months, our future assistance dogs live with our fantastic volunteer puppy parents and learn the fundamental skills they need to start advanced training.

- 3. Sending a puppy to advanced training - £5,000**
The young dog will join us at one of our centres for their advanced training (typically 17 weeks long). They will learn the crucial and complex skills necessary to support a person with disabilities.



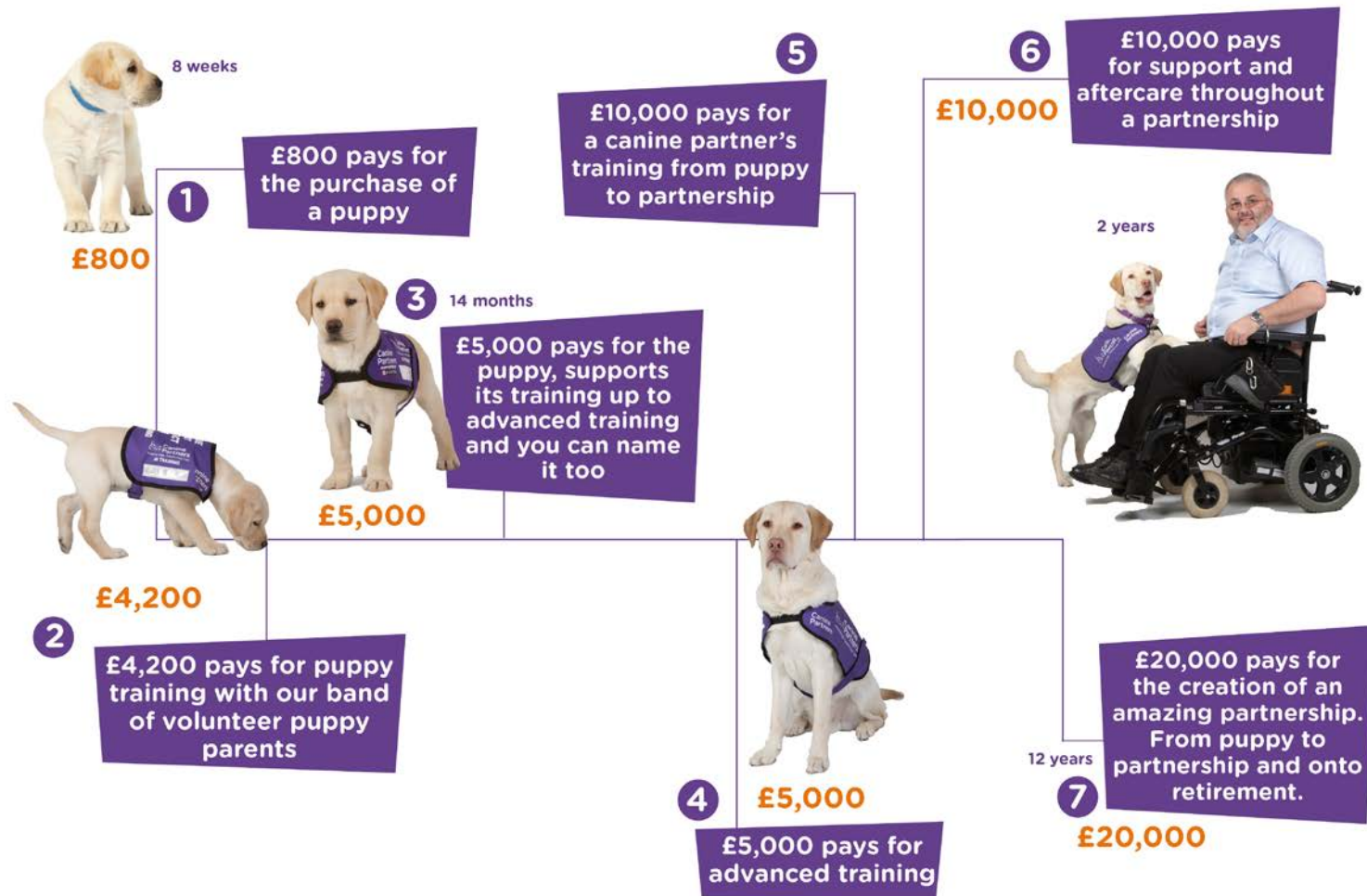
£800 pays for the purchase of a puppy

- 4. Supporting the partnership - £10,000**
On completion of training, a partnership is established. We provide the canine partner with ongoing aftercare for the duration of the partnership (on average 10 years).

- 5. Creating an entire life-changing partnership - £20,000**
This sponsorship package funds a lifetime partnership, from stages 1-4.



£10,000 pays for the support and aftercare throughout a partnership



Dr. Diana Holdright, a Harley Street Consultant Cardiologist, generously gave the Gift of Independence to fund an entire partnership.

"I learned about Canine Partners through my connection to Angela Hamlin, the founder of Draycott Nursing & Care. Over the years I've referred many of my patients to Draycott, on account of their wonderful private nursing services.

"Whilst Angela is a long-term supporter of Canine Partners, I didn't know very much about the charity until I attended the Draycott carol service in 2017 which was held to raise funds for, and awareness of, their great work.

"Listening to the partners speak was a really humbling experience – sometimes we take our mobility and autonomy for granted. It was powerful to hear the stories of Alan Edbrooke, with golden retriever Hamlin

[sponsored by Angela and Draycott Nursing & Care], and Jo Hill and her black Labrador Unis. They spoke so eloquently about how their canine partners have vastly improved their lives.

"I was compelled to help however I could, so opted to fund an entire partnership. Since finding out about the charity I have also told many people about the truly amazing work of Canine Partners and their assistance dogs."

For more information about giving the Gift of Independence, please visit our website www.caninepartners.org.uk/give-gift-independence-sponsorship/, call **08456 580 480** or email dogsponsorship@caninepartners.org.uk

Opting to purchase and then support the puppy in their first year of training (total of £5,000) enables you to name him or her!

Our Purple

Spreading



Delivering informative talks is one of the most effective ways to raise awareness of Canine Partners and the life-changing work we do – which is why we rely so much on our network of fantastic volunteer speakers!

Here at Canine Partners, we currently have over 140 volunteer speakers across the UK. Made up of fundraisers, puppy parents and foster parents, partners and their assistance dogs, and Canine Partners staff, what they all have in common is an enthusiasm and dedication to inform children and adults – in schools, colleges, community groups and beyond – about our amazing dogs and the incredible work they do by supporting their partners.

These speakers are, in fact, our community champions. They work tirelessly to raise public awareness which, in turn, maximises our opportunity to gain more supporters and the vital funding we need to train even more dogs to meet the growing demand for canine partners.

So, how do you become a speaker and community champion?

If you're passionate about the work of Canine Partners; enjoy meeting people of all ages and walks of life; have your own transport; have some public speaking experience and feel confident in helping us to educate young people and adults about the impact physical disability has on a person's life and how an assistance dog can help, please get in touch – in return, we will be able to provide you with support to find talks in your area and presentation materials and resources to deliver them. If you'd like to join our network of volunteer speakers, please contact talks@caninepartners.org.uk.

To request a speaker to talk to your school or community group about our work, please visit

www.caninepartners.org.uk/book-an-educational-speaker or email talks@caninepartners.org.uk

Canine Partners Information Sessions

Through our Information Sessions, we welcome members of the public to come along and find out more about Canine Partners. The sessions are held at our Southern and Midlands Centres and provide an insight into our work and include a demonstration of skills by our dogs in training and a talk from an established partnership about the difference their canine partner has made to their life.

Forthcoming sessions:

THURSDAY 14TH JUNE

11.00am, 2.00pm and 6.30pm
Midlands Centre, Osgathorpe,
Leicestershire

TUESDAY 26TH JUNE

11.00am, 2.00pm and 6.30pm
Southern Centre, Heyshott,
West Sussex

TUESDAY 17TH JULY

11.00am and 2.00pm
Midlands Centre, Osgathorpe,
Leicestershire

THURSDAY 19TH JULY

11.00am and 2.00pm
Southern Centre, Heyshott,
West Sussex

TUESDAY 4TH SEPTEMBER

11.00 am and 2.00pm
Southern Centre, Heyshott,
West Sussex

TUESDAY 11TH SEPTEMBER

11.00am and 2.00pm
Midlands Centre, Osgathorpe,
Leicestershire

WEDNESDAY 10TH OCTOBER

11.00am and 2.00pm
Southern Centre, Heyshott,
West Sussex

THURSDAY 11TH OCTOBER

11.00am and 2.00pm
Midlands Centre, Osgathorpe,
Leicestershire

SATURDAY 3RD NOVEMBER

11:00am
Midlands Centre, Osgathorpe,
Leicestershire and Southern Centre,
Heyshott, West Sussex

For more information, or to register your interest in one of our Information Sessions, please visit www.caninepartners.org.uk/informationssessions or email talks@caninepartners.org.uk – but hurry as places are filling up quickly.

Family

the word and raising money



Liz Downs – one of our volunteer community champions – shares her experience of speaking and fundraising for Canine Partners.

“In 2011 I decided not to send out Christmas cards and instead donate money to charity. During my search for suitable recipients, Canine Partners stood out as one to go for! I’ve always been an animal lover but, with Canine Partners, I saw just how people could benefit from the bond, companionship and skills of a highly trained assistance dog.

“Initially I sponsored a puppy through Canine Partners’ My Amazing Puppy scheme (find out more on page 18 and 19), then, about two years later, an appeal for speakers caught my eye. After getting the low down on how to speak on behalf of Canine Partners, I was also asked to deputise for the East Sussex satellite fundraisers at a local dog show in aid of the charity and so I became a community champion, which simply involves getting out into the local area to meet people at events, put up posters and distribute leaflets.

“Along the way I got myself a notebook computer, mini projector and screen so that I



could turn up to any venue and deliver a presentation about Canine Partners and the amazing work they do.

“In 2016 I moved to the New Forest – away from my established network – so started off scouring the local press and noticeboards for possible groups and also began booking pitches at local craft fairs and events.

“The need to find speaking opportunities helped me integrate into my new area – volunteering is a great way to make friends. With the support of my new friends I’ve organised a fundraising quiz night

and ploughman’s supper at my local community centre.

“I’ve recently teamed up with Barbara Houston and her amazing canine partner, Mungo, and we now do talks together. Barbara covers the partner training and tells everyone what a huge difference Mungo has made to her life.

“The support is always there, from Canine Partners, and it is such a rewarding thing to do – you really can make a difference. If you’re thinking of volunteering for Canine Partners...don’t think about it, do it!”

Volunteers are the lifeblood of our charity and there are so many ways you can help us – please visit www.caninepartners.org.uk/volunteering for more information.



Partnership

Paul and Ralph

Carpenter Paul Phillips enjoyed the life of a typical 20-year-old man – he had a long-term girlfriend, a large circle of friends and had started his dream job as a kitchen fitter.

A car accident in November 2012 changed his life forever but, with determination, positivity and canine partner Ralph by his side, Paul has adapted to his new life...

"I was driving my new car when I crashed and broke my neck. I spent two long months in intensive care, fighting for my life. The doctors told my family that I had a high-level spinal cord injury and would be paralysed from my neck down.

"Once I was stable enough to leave intensive care, I spent a further seven months in the Royal National Orthopaedic Hospital in Stanmore where I received specialist care and support in

learning to live with my injuries. I was taken off heavy medication and was beginning to learn to breathe without a ventilator when I started to get some movement back in my left arm.

"Eventually, after a lot of physiotherapy, occupational therapy and hard work, I was able to move both my arms but I still cannot use my hands very much. With good control of my left wrist I can now use my finger and thumb to pick up small objects and use a splint on my index finger to type on a phone or tablet although I need 24-hour support from carers."

Paul suffered from severe depression, due to the accident and the subsequent life changes.

"On my 21st birthday, in July 2013, I was discharged from hospital and it was decided I should live with my parents until I got used to

my new life. With my family and friends at work during the week, I grew very bored and would sleep until late afternoon then play computer games. I also had a lot of hospital appointments and stays, as my health wasn't great."

Turning his life around

In July 2014, a year after leaving hospital, Paul went on an activity course in the Lake District with a charity that supports people with spinal cord injuries.

"I realised my life wasn't over – there is still plenty I can do. I went sailing, kayaking and used special equipment to go off-road and up a mountain. It was the wake-up call I'd needed to get myself back on track and move on. I wanted to look at my experience in a positive way, so I volunteered to give speeches in secondary schools about road safety.

"I started going out with my family and our dogs and I really enjoyed the fresh air. I was lucky to have an indoor/outdoor wheelchair but still found it difficult to go off-road so I found an all-terrain wheelchair and now go anywhere I want, in any weather, which is great.

"After sending off the relevant paperwork I had a phone call about attending an assessment day. It went really well – I worked with lots of different assistance dogs and could tell instantly I'd benefit from having one of my own."

Around 18 months later, Paul made the journey from his home in Harpenden to our Southern Centre to meet golden retriever Ralph – a prospective canine partner.

"As soon as Ralph saw me, he came straight over and licked my face – there was an instant connection and I knew he was the dog for me. He stood close to me so I could stroke him for the rest of the afternoon."

A few weeks later Paul was back at Heyshott for a two-week residential training course which mostly involved practising tasks with Ralph – their partnership was cemented.

"Ralph made an immediate improvement to my life. He presses an alarm that calls my carer if I need help; he gives me my phone and finger splint; he takes my jacket off, and my gloves in the winter, and helps remove my blankets if I get too hot at night. Ralph opens and closes doors and can press the controller to my electronic assistive technology – turning on or off lights, fans, heaters and my TV. Ralph is also great fun to have around – he makes me laugh. Although he's well-trained he can also be quite cheeky – sometimes he brings me

the phone or remote control, when I don't need them, just so he can get a treat!"

Ralph has enabled Paul to be more independent and, as a result, his confidence and health have improved.

"I'm no longer anxious or in and out of hospital. I've moved into my own specially adapted flat and I take Ralph out for a long walk on my own every day – we enjoy every second of it. The purple Canine Partners bandana always draws attention and we speak to a lot of people on our walks."

Paul is now pursuing a career as a counsellor – having already completed part of the course – and plans to take Ralph on holiday soon.

"Being able to be on my own is a big thing for me. After my accident I wasn't able to go out alone, even just around the block, due to ill health and the fact that I rely on other people for support. Ralph gives me the confidence to know that I'll be fine."



"I got an Arsenal season ticket and, while I was at a match, I saw someone in a wheelchair with an assistance dog. At home I did some research and found Canine Partners. To begin with I wondered whether I would be considered too disabled to have a dog but thought I should just apply and see what happened.



With your support we can unlock our waiting list and create more transformational partnerships, like Paul and Ralph's – give the Gift of Independence today, please visit caninepartners.org.uk/giftofindependence or call **08456 580480** (Monday-Friday, 9am-5pm).

Celebrating the companies who support us.

We're incredibly grateful to the businesses that support us via corporate partnerships, by appointing us as their charity of the year, or through their fundraising activities. Here's just a few corporate supporters who helped us in 2017 or pledged support for 2018

Foresters Friendly Society made us their friends!

We were delighted when the Southampton-based financial services company chose us to be their charity of the year in 2017, raising a spectacular £70,000 through fundraising and sponsored events, including:

- a glamorous black tie ball with Valerie Singleton in Bristol
- a zip wire challenge at Zipworld in Bangor, Wales
a sky dive in Salisbury
a gruelling coast-to-coast bike ride in Scotland

In addition, they invited our volunteer speakers to raise awareness at their local members' branches with talks and demonstrations.

Having sponsored Forester - who is now successfully partnered with Jon - they have also funded a further four puppies and helped

with building the kennels at our new Midlands Centre.



wilko sponsored a whole bundle of assistance puppies

wilko team members from stores across Surrey, Sussex, Hampshire and Berkshire chose Canine Partners as their regional charity of the year.

Running from April 2016 to March 2017, fundraising included in-store events, collection boxes and a proportion of the proceeds of their carrier bag sales and raised over £54,000 which funded the training of ten puppies, including one named Wilko - naturally!



Pets Corner, offering us loyalty and continued support

Big thanks to all at Pets Corner who have supported us since 2012. The family-run ethical pet retailer has helped us in so many ways, including discounted prices on all purchases for our volunteer puppy parents and partnerships and many fundraising and sponsored activities.



In 2017, support came from in-store collection boxes, an additional donation of £5,000, plus a courageous group of their staff even plucked up the courage to take on a sponsored sky dive for us!

Thanks, also, to the following companies for their support in 2017:

- 🐾 **Humberts Estate Agents** raised over £7,500 to sponsor puppy Humbert during his first year of training.
- 🐾 **Pets at Home's** Lifeline Cards scheme saw their customers nominate us to receive points from their purchases which could be redeemed against goods. The points we received in 2017 were equivalent to +£10,000 which we've spent on essentials for our puppies and dogs in training.
- 🐾 **Arbuthnot Latham**, the private bank, sponsored, supported and participated in our London abseil event at the ArcelorMittal Orbit which raised an amazing £45,000.
- 🐾 **National Express** customers raised over £13,000 to sponsor a puppy called Mabel. The name was put forward by a National Express customer in a competition run by the coach company.
- 🐾 **ACCA Global**, who ran a fundraiser at their offices for us.
- 🐾 **Diametric**, who have sponsored the graphics on one of our vans.

AND IN 2018...

Gregg the assistance dog the best that money can pie!

Having initially raised a sum of £5,000, which enabled us to purchase and provide the first year of training and care for puppy Gregg, after some serious fundraising activity, shops from the south region of the UK's leading bakery food-on-the-go retailer, Greggs, have now contributed a total of £20,000. This invaluable contribution will provide enough funds to support the full training of an assistance dog and the creation of a future partnership through our Gift of Independence scheme (see pages 20 and 21 for more information).

Sarah Boxall, Regional Operations Manager at Greggs, first learned about Canine Partners and our work after she attended an event at our Southern Centre about three years ago. Subsequently, Sarah and some of her colleagues volunteered to help out by painting our offices and ever since then they have generously provided us with all sorts of support, including the provision of refreshments for some of our open days.

Sarah commented:

"Giving back to the community is something that's really important to us. The Greggs Foundation was set up to make a difference to the lives of people in need, and that's exactly what a Canine Partners' assistance dog does.

"A canine partner gives a person back their independence and helps them to lead a normal life. Not only do they make a difference with day-to-day tasks but the bond between human and dog is amazing and I'm so glad we've been able to help transform a person's life."

In the run-up to Christmas, over 400 Greggs shops had collection buckets dedicated to fundraising for Canine Partners and managed to raise a whopping £10,000. Spurred on to achieve the final target, Greggs then held a further collection in March which raised the remaining money to fund the aftercare for the partnership.



Retailer NEXT sponsors our Swinley Forest Golf Day

NEXT kindly sponsored our charity golf day in April at Swinley Forest Golf Club which raised over £30,000. When combined with their ongoing gifts of raffle prizes and donations, to date they have fully sponsored the creation of a partnership.

Purina – life really is better with pets

With a relationship spanning over 19 years, Purina is one of our longest-standing corporate supporters and is a partnership we can rely on.

Throughout our association, Purina has committed to providing us with vital financial support as well as generous gifts in kind.

In addition, each year they sponsor ad-hoc events: in 2017, Purina sponsored two carol services, in Long Melford and in London; their staff also ran fundraising events for us; and we were delighted

to welcome them as volunteers at the likes of our fundraiser in Canary Wharf and our Partnership Ceremony Days at our Southern and Midland's Centres.

Thank you to all at Purina, for your ongoing support and dedication – we look forward to working with you throughout 2018!



Your Pet, Our Passion.®

**We're excited to
announce the
new corporate
supporters for 2018:**

LonRes, property data network

Barclays International Bank

Baxter Healthcare Ltd

NoMuda Ltd



Meet Jane Grant...

Jane looks after corporate engagement, managing our relationships with businesses and organisations who pledge to support us and provides any assistance that they require:

“In 2017 we received over £200,000 from corporate supporters and we’re keen to build on this in 2018. Corporate support comes in many forms – partnerships which provide long-term financial support so we can plan with greater certainty, nominations and opportunities as becoming charity of the year for an organisation, or donations from an organisation’s customers at point of sale. Sometimes organisations are able to help us by allowing staff to volunteer at our events or training centres. They can also provide much needed expertise on projects within our charity or offer matched funding.

“We’re extremely grateful for all the help we receive from our corporate supporters. Organisations can be assured that we’ll always use it where it is most needed and that’s mainly in helping us raise funds which in turn allow us to create even more life-transforming partnerships. If we can reduce our waiting list we will be able to open our charity to new applicants who desperately need a canine partner. Whatever the size of an organisation or business or the professional sector we’re keen to discuss new opportunities.”



£5,000

will pay for the first year of puppy training, including all their classes, equipment, vet bills, food and insurance

£10,000

will fund all the training to get one of our puppies up to the point where they are fully trained and ready to be matched with their new owner

£20,000

will pay for the creation of a partnership and its support for life

Software corporation, SAP

staff are sponsoring a number of puppies as a result of a Canine Partners demonstration at their offices in March. If you’d like to support Canine Partners and want to kick off your support with a demonstration please contact Jane on 01730 716049 or email corporates@caninepartners.org.uk

A packed year full of fun and excitement

Canine Partners up in lights just in time for Christmas

To complete what was an outstanding 2017 **we were proud to be one of three beneficiaries in The Telegraph's Christmas Charity Appeal.**

Earlier this year we were astonished to find out that Canine Partners received an incredible £214,126.64 as a result of the appeal. The overall total raised for the appeal was £542,250.98, the other beneficiaries were Missing People and Fareshare – two worthy causes we were delighted to be up there in lights with.



On the first day of Christmas, Canine Partners gave to me...two outstanding carol services!

In December we were fortunate to enjoy not one but two carol services held in our honour. The first was also a first for our charity – the East of England Carol Service, held at the Holy Trinity Church in Long Melford, Suffolk and hosted by one of our corporate supporters, James Harkness and his wife Charlotte. With over 400 guests in attendance, the service was a fantastic success

raising in excess of £10,000. Special guests included Clare FitzRoy, Countess of Euston and HM Lord Lieutenant of Suffolk. Many thanks to James and Charlotte for organising such a special event.

A week later was the turn of the Draycott Nursing & Care Carol Service. A regular in our calendar of events and the 6th running of this superb Christmas spectacle. The service attracted over 450 guests and raised a superb £35,000. 2017's special guests included David Robb, James Dreyfus, Michael Peluso, Rula Lenska and Patti Boulaye. **Save the date: the 2018 event will be held on Thursday 13th December.**



Lasting impressions in prestigious locations

In October, the prestigious Fishmongers' Hall in London played host to over 100 guests for a demonstration from our amazing assistance dogs. Overlooking a sparkling Thames in the autumn sunshine, we were very privileged (and excited!) to be given access to one of London's most historic organisations, and one of the twelve Great Livery Companies of the city.

We were honoured to be joined by our Royal Patron HRH The Duke of Gloucester for this very special occasion which in addition to the demonstration also included a drinks reception and talk from Phil Eaglesham who was joined by his canine partner Cooper.

We are holding a similar event this year on Tuesday 30th October, but this time at Drapers' Hall London.



Our supporters have been extremely busy once more, bringing us a year packed with fantastic events. And they have all helped us raise essential funds so that we can continue training our amazing assistance dogs.

There have been too many superb fundraising and awareness events across the country to squeeze them all on this page so here are just a few.

We are forever grateful to everyone that took part in or helped organise an event for us during 2017.



Abseiling for amazing dogs

In May 2017 our challengers went to new heights – quite literally – as over 70 brave individuals queued up like lemmings on a cliff top to abseil down the ArcelorMittal Orbit (aka the big red Olympic sculpture made famous in London 2012). This is the highest 'freefall abseil' in the UK, which means that you dangle from a rope rather than having a wall to put your feet on. The purple army turned out in force to cheer on all participants who included many staff from Arbuthnot Latham, galvanised into action

by one of our trustees, Stephen, who works there.

This fantastic challenge raised over £45,000 and it was such a success, we'll be doing it again this year.



What's on the cards for 2018?

Some events have already taken place this year but there are more thrilling opportunities to raise much-needed funds during 2018 with our calendar of events.

Here are just a few but please visit our website caninepartners.org.uk/events to find out more and what's happening near you.

For more information or to sign up for any of our events, contact our national events team on **01530 225939** or email events@caninepartners.org.uk.

Sign up today

8th June – Enjoy lunch with Canine Partners at Tylney Hall Hotel & Gardens in Hook, Hampshire

21st June – Our second ArcelorMittal Orbit abseil in Queen Elizabeth Olympic Park, London

5th July – Canine Partners climb the O2 at The O2, London

6th – 10th Sept – Join us on a cycling challenge from London to Paris

23rd Sept – We host our first Pedal for Paws bike ride from our Midlands Centre

30th Sept – Pedal for Paws returns to our Southern Centre for the 3rd time

21st Oct – Forth Rail Bridge Abseil for Canine Partners, South Queensferry

23rd Oct – Join us at Canada Square Shopping Centre for shopping, fundraising and more

