

### Stage 5 - £10,000: (Stages 1 to 4)

For a total of £10,000 you can name the puppy and support all its training.

We will send you an introduction to your puppy and now young dog, as with the other stages you'll receive a second update at around six months into its puppy training.

We will then let you know when they have progressed into advanced training. As your dog comes to the end of their two week training with their new partner we'll send you a further update and photo.

Finally you will receive an invitation to the graduation of the partnership which normally takes place 12 months into the working partnership.



### Stage 6 - £10,000:

Following the successful completion of the advanced training and a partnership is formed, we provide ongoing aftercare for the duration of the partnership, on average 10 years.

You will receive all information about your dog from puppy purchase to partnership, updates on how the partnership is progressing and an invitation to the graduation of the partnership, usually 12 months into their working relationship.

### Stage 7 - £20,000:

For a total of £20,000 you can create an amazing partnership like Martin and Keith:

Martin has a spinal injury which means he has to use a wheelchair. We helped transform his life with canine partner Keith.

Martin explains, "Before Keith, there was a slow deterioration in my physical ability and confidence. But once I brought him home the change in my life was almost instant. Keith has changed my life from one of increasing solitude to a bright fun filled, and confident forward looking future."



### Give the Gift of Independence today

You could help us create an amazing partnership and give the Gift of Independence to a disabled person.

If you have any questions about our Gift of Independence sponsorship programme please contact us, on 01530 225939 or email:

dogsponsorship@caninepartners.org.uk

Give the Gift of Independence and transform a life



Call us

0845 208 7500\*



or visit

[caninepartners.org.uk/giftofindependence](http://caninepartners.org.uk/giftofindependence)

\* Lines open 9am-5.30pm Mon-Fri.

Canine Partners, a company limited by guarantee. Registered in England 2516146. Charity Commission Registered No. 803680. Scottish Charity Registered No. SC039050.

# Give the Gift of Independence

## Sponsor an amazing dog and create a life transforming partnership



# Gift

# of

# Independence



# Canine Partners

Amazing dogs. Transforming lives.



Call us: 0845 208 7500



Visit: [caninepartners.org.uk](http://caninepartners.org.uk)

**Give the Gift of Independence  
Sponsor an amazing dog and create  
a life transforming partnership**

**Our sponsorship programme includes seven different stages:**

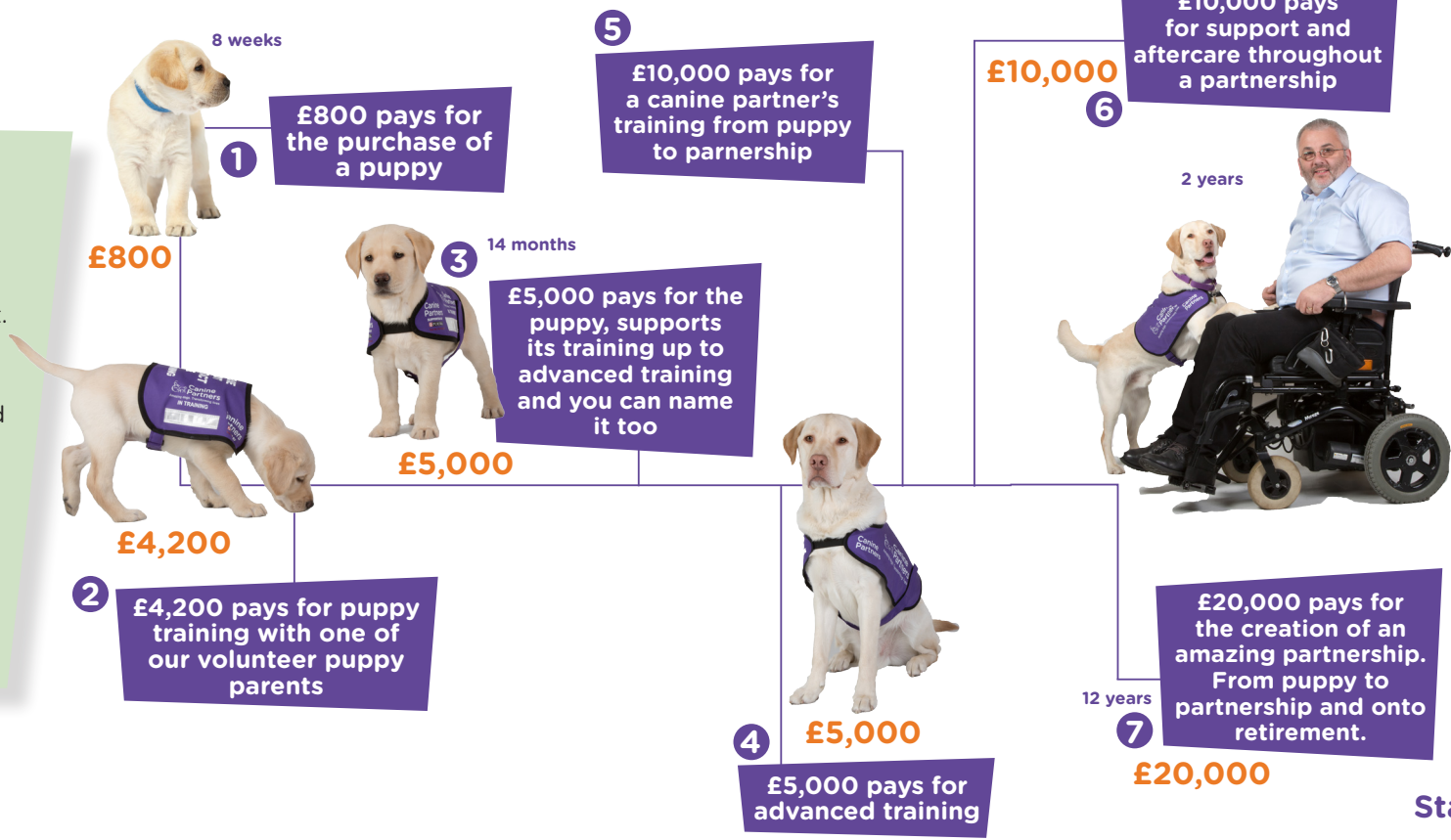
- 1 £800** - pays for the purchase of the puppy
- 2 £4,200** - pays for the puppy training with one of our volunteer puppy parents
- 3 £5,000** - purchases a puppy, supports its training up to advanced training and you can name it too
- 4 £5,000** - pays for 17 weeks of advanced training at one of our centres
- 5 £10,000** - supports a canine partner through all of its training
- 6 £10,000** - pays for the support and aftercare throughout the partnership
- 7 £20,000** - creates an amazing partnership, supports them from puppy to partnership and on to retirement

**Stage 1 - £800:**

We will send you an introduction and a photo of the puppy we have been able to purchase with your gift.

We will then let you know when they progress into advanced training.

Finally you will receive an invitation to the graduation of the partnership which normally takes place 12 months into the working partnership.



**Stage 2 - £4,200:**

We will send you an introduction and a photo of the puppy that will be trained with your gift.

A second update at around six months.

Finally you will receive an invitation to the graduation of the partnership which normally takes place 12 months into the working partnership.

**Stage 3 - £5,000:** (Stages 1 + 2)

You can purchase the puppy, support the puppy training, receive an invitation to the graduation of the partnership and name the puppy too.

**Stage 4 - £5,000:**

After 14 months with their puppy parent, the young dog joins advanced training at one of our centres.

During 17 weeks of training the dog learns the skills necessary to support a disabled person and at the end will be matched and learn specific needs relevant to their partner.

We will send you an introduction and a photo of the puppy and as a young dog.

We will send you an update during their advanced training.

We will send you an update and photo of the dog as their training comes to the end of the two week residential training course with their new partner.

Finally you will also receive an invitation to the graduation of the partnership which normally takes place 12 months into the working partnership.